

# BENFER LEVEL

Rev.02

## QUICK SETTING AND QUICK HARDENING SELF-LEVELLING CEMENT PRODUCT FOR THE LEVELLING OF HORIZONTAL FOUNDATIONS FROM 0 TO 15 MM OF THICKNESS INSIDE USE

### TECHNICAL FEATURES:

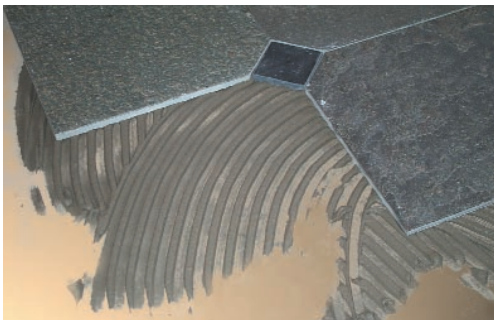
BENFERLEVEL is a special powder product made up by cements, aggregates and selected additives, fit for easy levelling of horizontal foundations up to 15 mm of thickness "each coat", ready to receive ceramic



floors or floors made up by other similar materials after 24 hours from the laying and with a humidity content inferior to 2% after 72 hours (at 23° and 50% r.h.).

### FIELDS OF APPLICATION:

Levelling of cement foundation's coverings of old



or recent construction.

### METHOD OF USE AND CONTRA-INDICATIONS:

Foundations should be stationary and non-deformable, not free to do any movement outside the elastic oscillations and vibrations which are proper for the structures; in addition, foundations

should be perfectly dry, clean and degreased with care. BENFER LEVEL must not be used on glazed tiles or non absorbing tiles. The mixture ratio



must be absolutely respected because an eventual excess of water would surely cause a greater shrinkage with the consequent forming of superficial cracks besides having scant guarantees of anchorage to the foundation. After 24 hours it is possible to go on with the tiling of floors in ceramics or other similar materials, whereas for wooden, rubber or PVC floors it is indispensable previously to check by a proper hygrometer that the humidity of the foundation is under 2,5% (normally after 72 hours at 23° and 50% r.h.). For the preparation of foundations which will be covered with parquet floor, the minimal thickness of



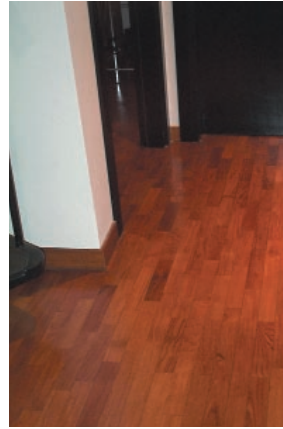
Benfer Level should be of 3 mm

#### PREPARATION OF THE MIXTURE:

Mix BENFERLEVEL with the 26% of clean water (7 litres of water to each bag with powder) by electrical drill at low number of revolutions so much to obtain a homogeneous, clot less mortar. At this point the product is ready for use and it has to be used within the following 30 minutes.

#### APPLICATION:

Pour the product on the foundation and spread it by a smooth spatula in an even way. The levelling of thickness higher than 15 mm are possible with other following applications as the first coat has



reached a sufficient consistency.

#### COVERAGE AND PACKAGING:

1,4 kg/m<sup>2</sup> to each millimetre of thickness. BENFERLEVEL is available in 25 kg poly-lined bags and 1500 kg pallet loads. It can be stored up to 6 months in intact bags and in a dry place.

### TECHNICAL DATA OF THE PRODUCT

CONSISTENCY:	POWDER
COLOUR:	DARK GREY
SHELF LIFE:	POWDER: 6 MONTHS WHEN STORED IN THE ORIGINAL UNOPENED PACKAGING, IN A DRY PLACE.
DANGER OF TOXICITY:	NO THE CEMENT CONTENT OF THE PRODUCT MAY CAUSE IRRITATION TO SKIN AND EYES. WE SUGGEST TO ADOPT APPROPRIATE PROTECTIONS
INFLAMMABLE:	NO
MIXING RATIO:	28 PARTS WATER TO 100 PARTS POWDER BY WEIGHT
MIXING CONSISTENCY:	FLUID
APPLICATION TEMPERATURE:	FROM + 5° C TO + 30° C
POT LIFE:	30 MINUTES AT 23° C
WALK ON AFTER:	4 HOURS AT 23° C

#### FINAL PERFORMANCE

DAMP RESISTANCE:	LIMITED
COMPRESSION STRENGTH AFTER 3 DAYS:	17 Mpa
COMPRESSION STRENGTH AFTER 7 DAYS:	20 Mpa
COMPRESSION STRENGTH AFTER 28 DAYS:	27 Mpa
FLEXURAL STRENGTH AFTER 3 DAYS:	4,5 Mpa
FLEXURAL STRENGTH AFTER 7 DAYS:	7 Mpa
FLEXURAL STRENGTH AFTER 28 DAYS:	8,5 Mpa
RESISTANCE TO TEMPERATURE:	FROM - 30° C TO 90° C
FLEXIBILITY:	POOR

NB: The information given in this chart is based on our best experience and indicative only.

It must in any event be verified by the end user, who assumes all liabilities deriving from utilization of the product.